



- ❖ Single-port PoE+ Injectors
- ❖ Compatible with IEEE 802.3af/at
- ❖ Maximum Output Power 30W
- ❖ Input Power Supply 10-30VDC
- ❖ Output Voltage 52VDC / 0.3A
- ❖ Overvoltage Protections PoE (Transil + Lighting Arrester)

- ❖ Mount to a Flat Surface or DIN35 Rail
- ❖ Operating Range -40°C to +70°C

| PRODUCT NAME | CODE | SUPPLY |
|--|-----------|----------|
| POE-PSE-30-BOX | 4-100-300 | 10-30VDC |
| Holder for mounting DIN35 and flat surface are included. | | |

Description and technical parameters

PoE-PSE-30 are single-port PoE+ injectors with max. output power 30 W. The injectors are fully compatible with all PoE devices in accordance with IEEE 802.3af/at (MODE B).

| Parameter | Value | Unit | Note |
|---|----------------------------|-----------------------|-----------------|
| Data pins 1-2, 3-6 | Ethernet | 10/100 | Mbps |
| PoE pins 4-5, 7-8 | PoE | 48 | VDC PoE mode B |
| Max. Output Power | 30 | W | Σ PoE + VOut |
| Overvoltage Protections | Rough + Fine | | |
| Power supply | Operating Voltage | 10 - 30 | VDC |
| | Power Consumption | 20 | mA |
| | VOut | 52 | VDC Max. 0.3 A |
| Environment | Operating Range | -40 to +70 | °C |
| Mechanical | Dimensions | page 2 | mm |
| | Ports | Ethernet: RJ45 | |
| | | 10 - 30VDC: Terminals | |
| | PE Connection | Cable 1,5 | mm ² |
| | Product is Compatible with | CE | |
| The producer retains the right to change any technical parameters without previous written or published notification. | | | |

Electromagnetic compatibility

| Standard | Testing level - Criteria |
|-------------------------------------|--------------------------|
| EN 55024 – Immunity characteristics | |
| EN 61000-4-2 – contact discharge | Level 4 - criteria B |
| EN 61000-4-2 – air discharge | Level 4 - criteria B |
| EN 61000-4-4 – bursty | Level 4 - criteria B |
| EN 61000-4-5 – surge immunity | Level 4 - criteria B |
| EN 61000-4-8 – magnetic field 50 Hz | Level 5 - criteria A |
| EN 61000-4-9 – pulse magnetic field | Level 5 - criteria A |
| EN 55022 – radiated emission | Class A |

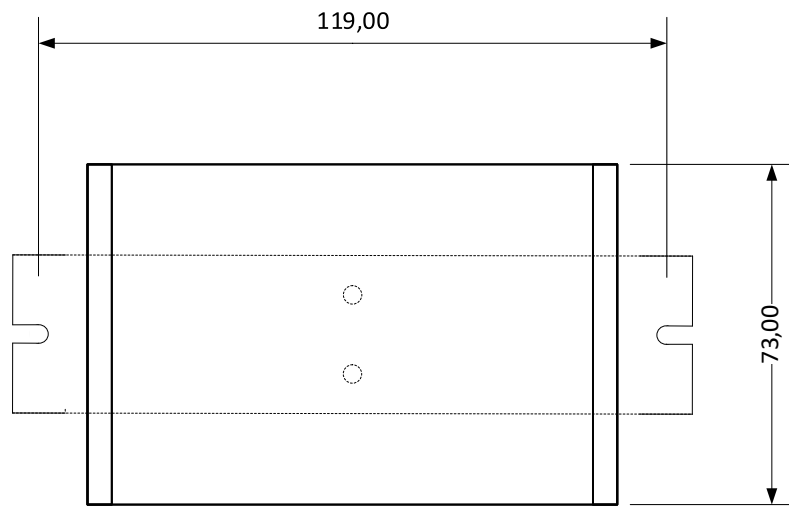
This modern design injectors meets the demandign requirements for electromagetic compatibility, the intergrated overvoltage protections on all ports allow for the use of these injectors in industrial use, including use in outdoor enviroments:

- ❖ low influence ecologically,
- ❖ low levels of radiation,
- ❖ little warming even at maximum power.

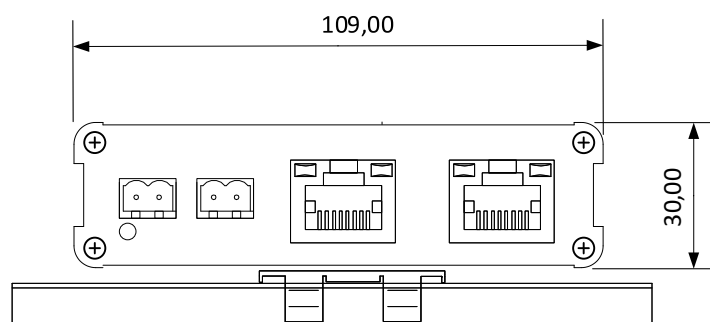
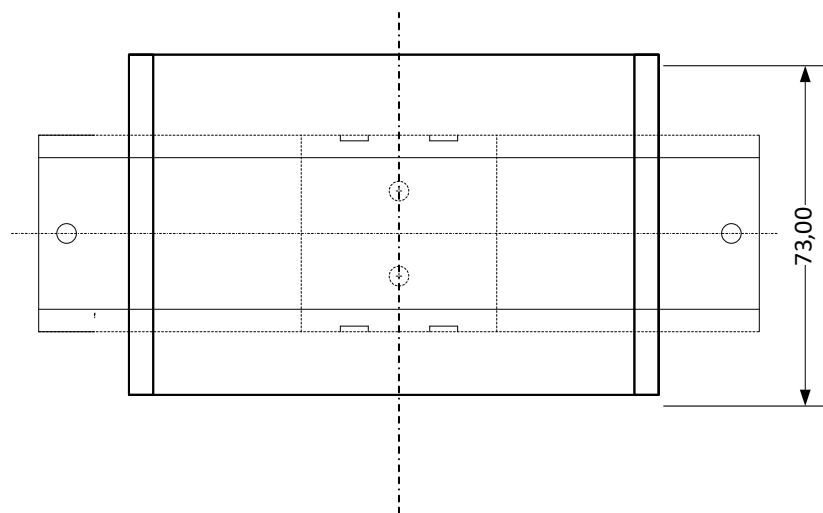
Dimensions

univesality

POE-PSE-30



POE-PSE-30 + DIN35-LOCK*



*Holder for mounting DIN35 and flat surface are included.

REV: 201608 – Default

201809 – New Version with 52VDC Output

POE-PSE-30-BOX

Industrial PoE+ Injectors

Description and technical parameters

PoE-PSE-30 are single-port PoE+ injectors with max. output power 30 W. The injectors are fully compatible with all PoE devices in accordance with IEEE 802.3af/at (MODE B).

Powering includes these three steps :

- 1.) Detection of a device compatible with PoE.
- 2.) Classification of the device according to power classes.
- 3.) Connection of full 48VDC supply.

For proper functioning of the overvoltage protections the yellow-green wire must be grounded.

